

## NEW ZEALAND STAMPED-TO-ORDER ENVELOPES

From Queen Victoria through the reign of King George VI

This is a "junk" mail exhibit. It deals with envelope stock submitted by individuals and companies to the New Zealand Post Office for stamping with the value of the user's choice. In the vast majority of cases this was a halfpenny or one penny die and the envelopes were used to mail out bills, statements or invoices. Like almost all of us, the enclosure was kept and the envelope was thrown away.

The most common stamped-to-order envelope until 1953, exists in no more than 10 examples, most 5 examples or less and seven are known in one example only. All seven are shown in this exhibit.

Robert Samuel, in his 1993 publication dealing with stamped-to-order envelopes, lists sixty-one stampings which were done between 1900 and 1953, which were unrecorded in collectors hands at that time. Since then four of those have surfaced and all four are shown.

Dr. Russell, Christchurch- the first to have his personal envelopes stamped with New Zealand dies

Issue of 17 July 1900, 1d vermillion Queen Victoria die on grey stock

17 July 1900, 2d violet Queen Victoria die on grey stock



Dr. Russell ordered envelopes from the Culleton Company in London with his personal crest embossed in gold on the flap. Until the Spring of 2006, no examples of these 1d and 2d envelopes had been recorded and these remain the only unused or used examples in collectors' hands.

# NEW ZEALAND STAMPED-TO-ORDER ENVELOPES

Hancock & Company, Auckland

Issue of October 1900, 1d carmine on creamish



Only recorded unused example



Perhaps this envelope was first intended to have an adhesive stamp in the middle of the blue rectangle. However since this would have blocked some of the lettering it was decided to have the envelopes stamped to the left of the frame

# NEW ZEALAND STAMPED-TO-ORDER ENVELOPES

T.H.Hall & Company, Auckland

Issue of 20 November 1901, 1d carmine on cream laid paper, blue printing  
28 April 1902, 1d carmine on cream laid paper, brown printing



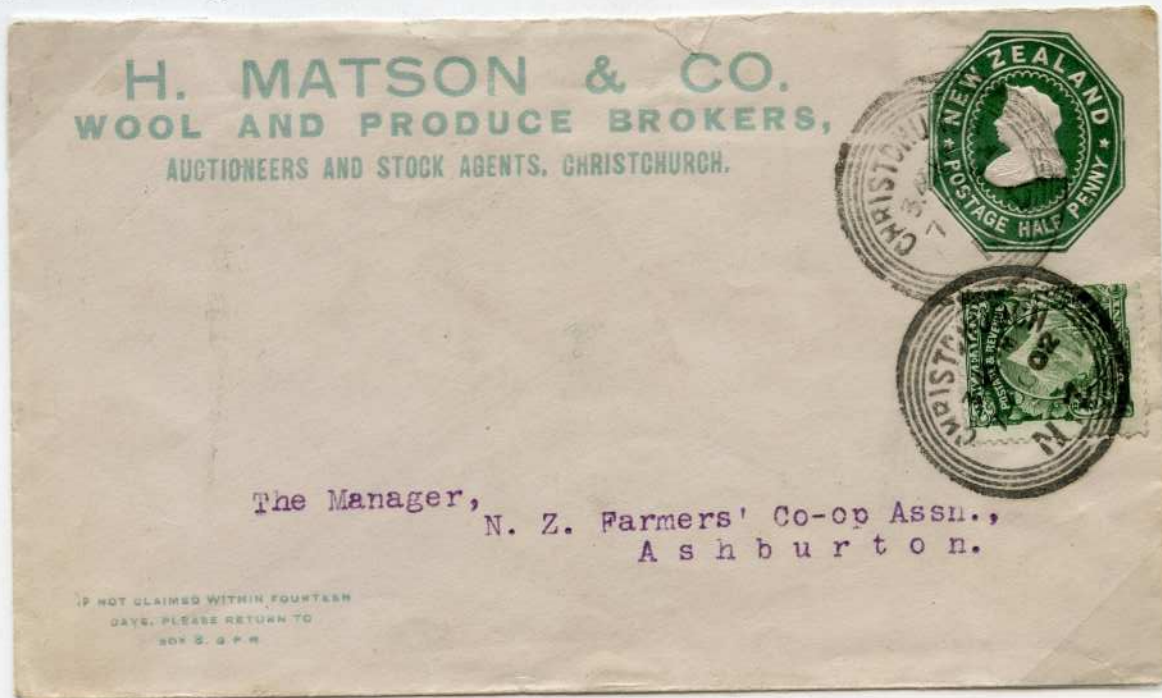
The brown printing was of 2000 envelopes and the blue printing was of 1968.

The top example is the only known unused example and the only known New Zealand private envelope with a double struck die.  
Five used examples recorded of the others

# NEW ZEALAND STAMPED-TO-ORDER ENVELOPES

H. Matson & Co., Christchurch

Issue of March 1902, 1/2d green on white



This was the only issue of private envelopes to be stamped with the 1/2d Queen Victoria die.

Issue of February 1901, 1d carmine on white



Ex Samuel



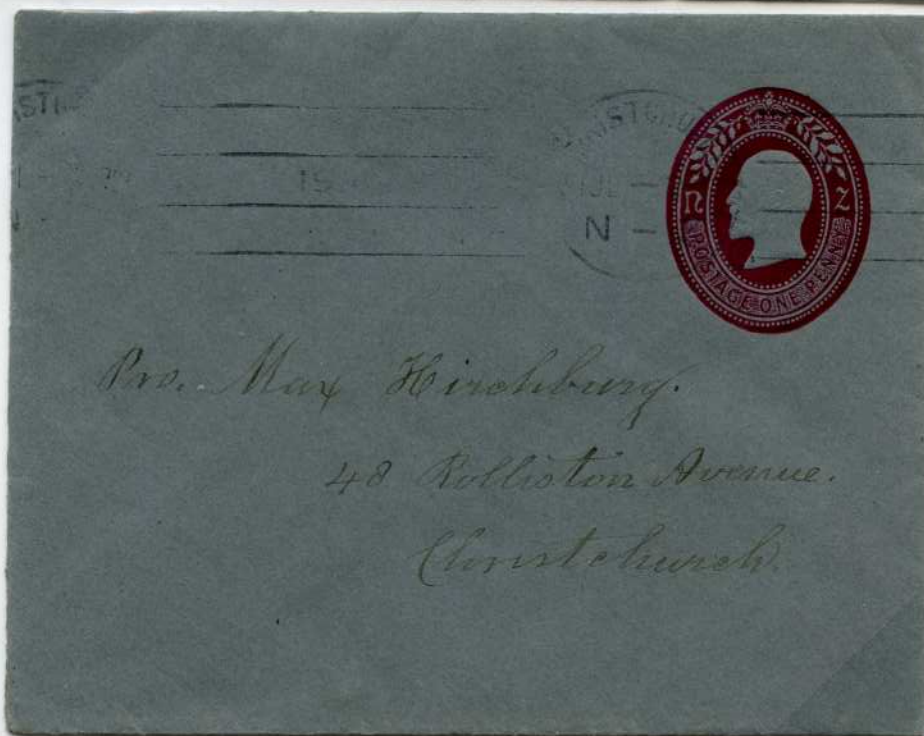
# NEW ZEALAND STAMPED-TO-ORDER ENVELOPES

Dr. Russell, Christchurch

Issue of 9 July 1902, 1d carmine Queen Victoria die on grey  
21 July 1904, 1d carmine Edward VII die on grey



Three  
examples  
known



Two  
examples  
known

Ex  
Samuel

The basic envelope was manufactured by the Culleton Company of London. It featured Dr. Russell's personal seal in gold and red respectively on the reverse flap of the Queen Victoria and Edward VII die stamped envelopes. A number of printings were made between 1900 and 1913 but few examples are known today.

# NEW ZEALAND STAMPED-TO-ORDER ENVELOPES

T.H. Hall & Co., Auckland

Issued between May 1903 and March 1908, 1d carmine on cream



These envelopes are found with the printing in brown and blue. According to the registers in the Government Printing Office, eleven different printings were done.

# NEW ZEALAND STAMPED-TO-ORDER ENVELOPES

Whitcombe & Tombs Ltd, Christchurch

Issue of 3 October 1907, 1/2d green on white

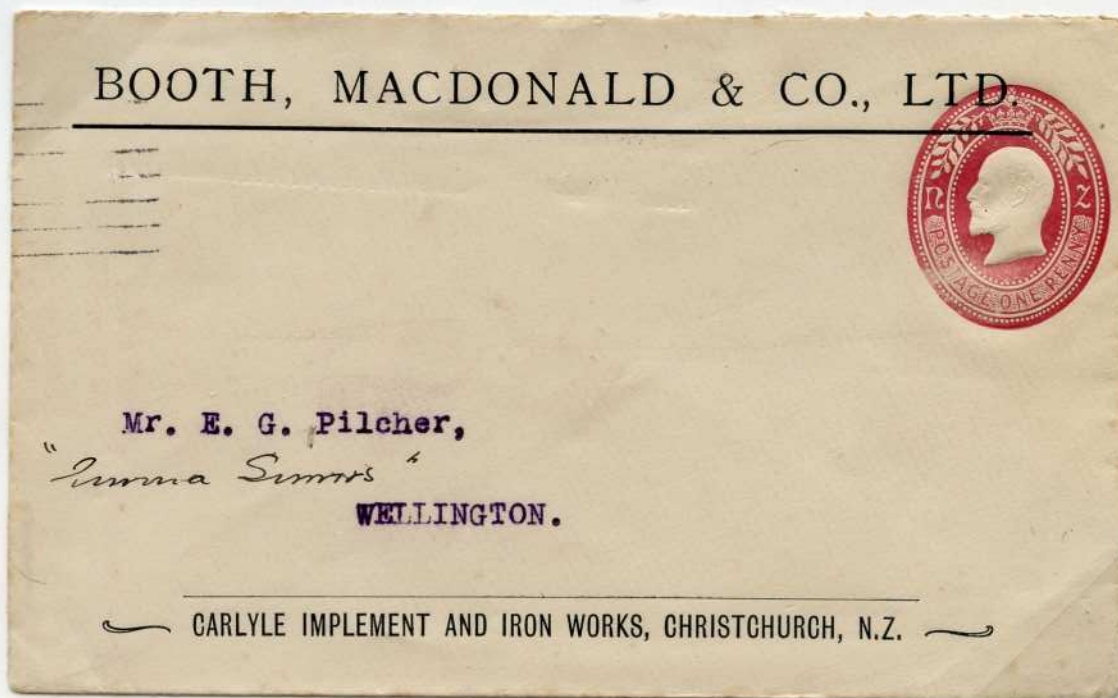


Whitcombe & Tombs were a company of stationers in Christchurch. This was likely stamped for one of their customers. One printing of 500 was done.

Two examples known Ex Samuel

Booth, Macdonald & Co. Ltd., Christchurch

Issue of 6 September 1906, 1d carmine on white



One example known Ex Samuel

# NEW ZEALAND STAMPED-TO-ORDER ENVELOPES

Oxford Water Board, Oxford  
Issue of 24 May 1917, 1 1/2d black on white

T. & S. Morrin & Fenwick Ltd., Auckland  
Issue of 4 October 1921, 1 1/2d yellow brown on white



Unique

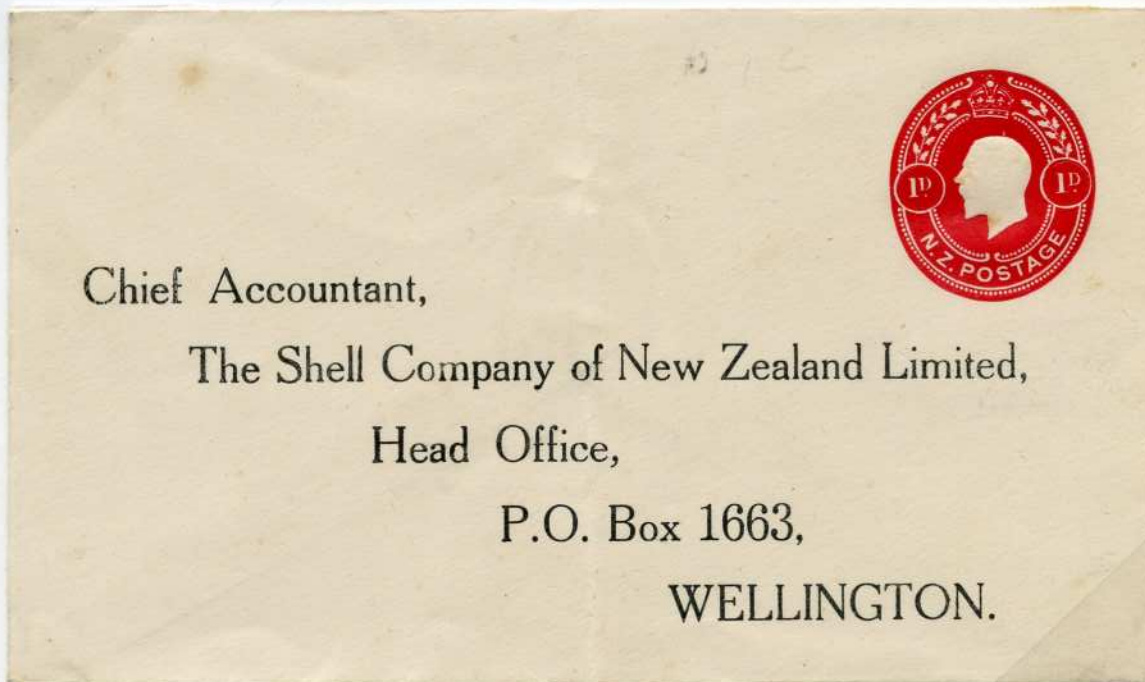
Ex Samuel



Both of the above envelopes are known as cut-outs only

The Shell Company of New Zealand Ltd., Wellington

Issue of August 1930, 1d carmine on white



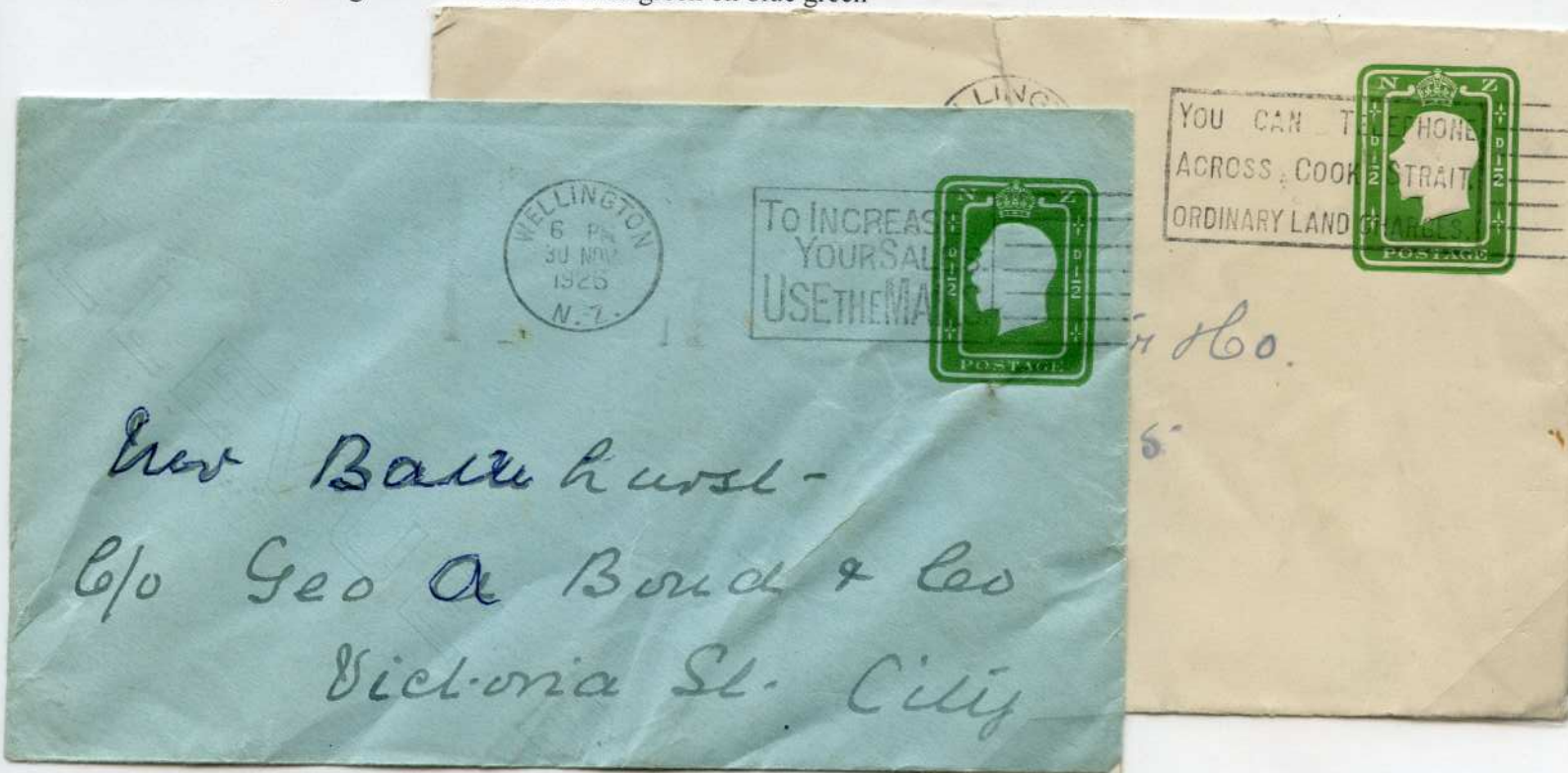
This die was also used for stamping Department of Education envelopes

Few examples recorded

NEW ZEALAND STAMPED-TO-ORDER ENVELOPES

Vance Vivian Ltd., Wellington

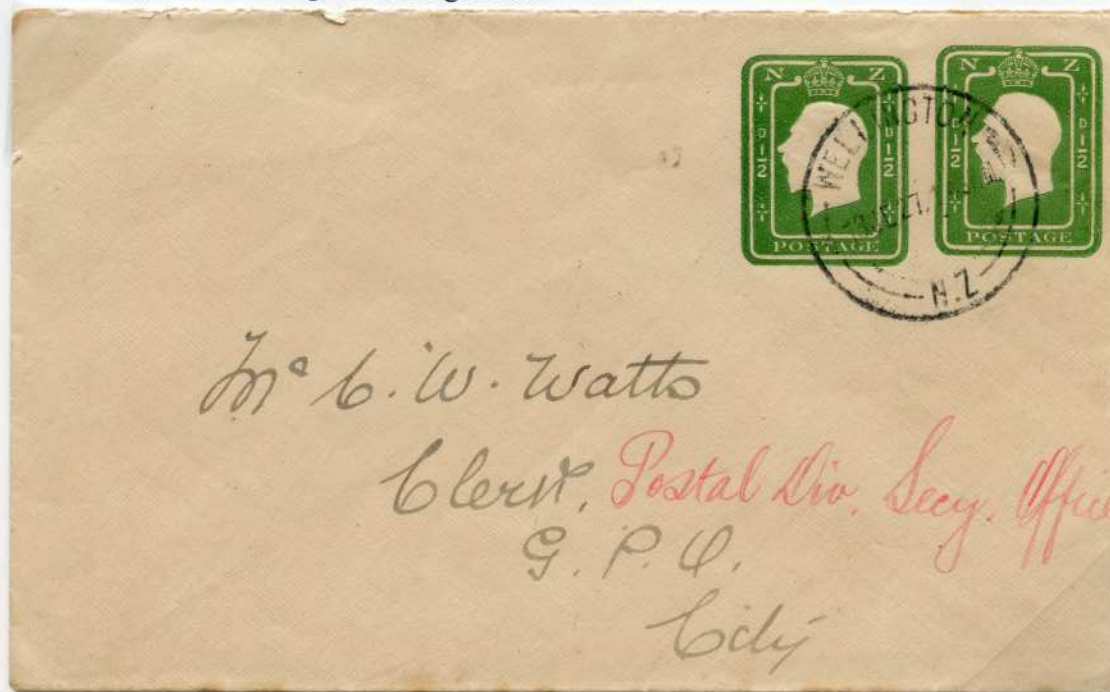
Issue of March 1926, 1/2d green on white and 1/2d green on blue green



*New Balmhurst -  
 c/o Geo A Bond & Co  
 Victoria St. City*

The example on blue green stock is the only recorded to date

Issue of July 1926, 1/2d green + 1/2d green on light buff



*M<sup>r</sup> G. W. Watts  
 Clerk, Postal Div. Secy. Office  
 G. P. O.  
 City*

At this time there was no 1d King George V die held in New Zealand, as the 1d envelopes were still being printed in England. The dies being held in New Zealand were the 1/2d envelope die and the 1 1/2d private postal stationery die. Thus two stampings of the 1/2d die were necessary.

Few examples recorded Ex Samuel

NEW ZEALAND STAMPED-TO-ORDER ENVELOPES

n Ltd., Wellington

ch 1926, 1/2d green on buff with flap at left  
e 1926, 1/2d green + 1/2d green on buff with flap at left  
er 1928(?), 1/2d green on white with flap at left



*Mr. A. Hunt.*



N Z  
1926

TE ARG  
AU30-4-PM

N-Z  
1926

TE ARG  
AU30-4

*Mr L. A. Golding*



*Res Pinfold*

*The Nook*

*Karori*

# NEW ZEALAND STAMPED-TO-ORDER ENVELOPES

Bible in Schools League, Dunedin

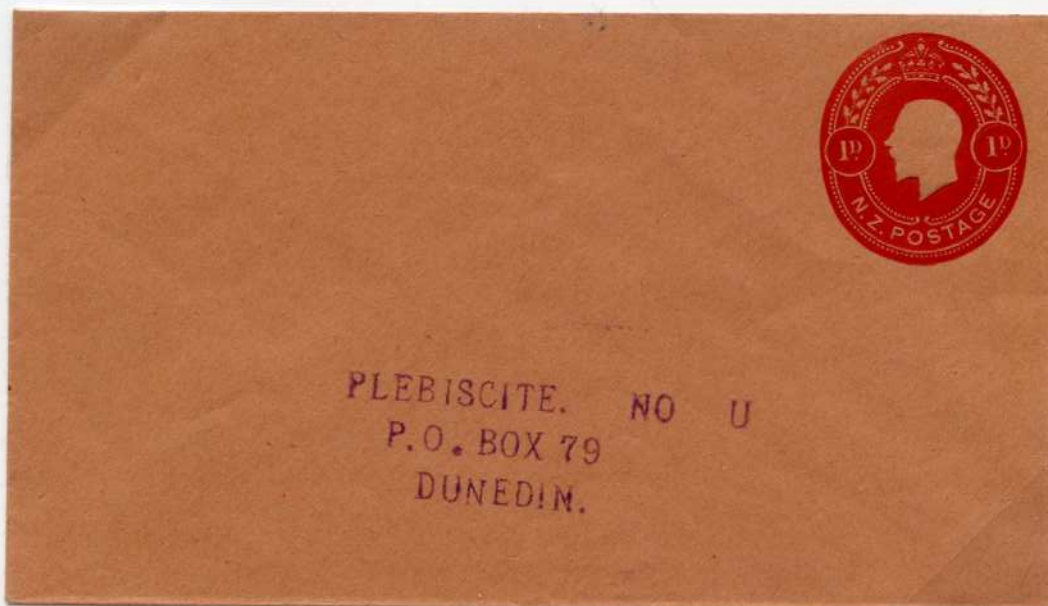
Issue of 10 May 1927, 1/2d green on light buff



Used to send a questionnaire and reply envelope to the league members. Since it was entirely printed matter it could be mailed for only 1/2d.

Ex Samuel

Issue of 10 May 1927, 1d carmine on flesh



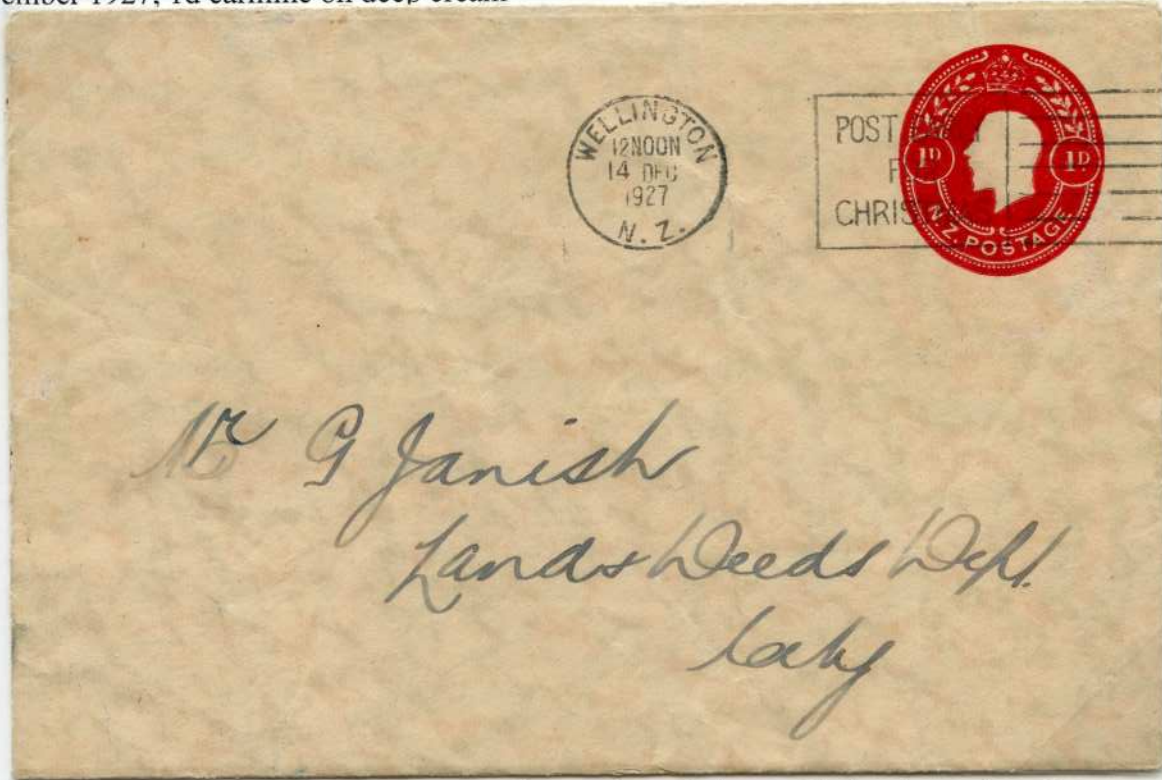
This is the envelope that was enclosed in the 1/2d envelope above. Since the questionnaire, when filled out, would have the nature of personal correspondence postage of 1d was necessary.

Three examples recorded

NEW ZEALAND STAMPED-TO-ORDER ENVELOPES

Vance Vivian Ltd., Wellington

Issue of 28 November 1927, 1d carmine on deep cream



One order of 3391 envelopes was stamped. Because the envelope had a mottled watermark and a paper lining, it is assumed that it was used as a "Christmas Card" but no example of the enclosure has surfaced to date.

Few examples recorded

Stainton & Company, New Plymouth

Issue of 14 May 1930, 1/2d green on white

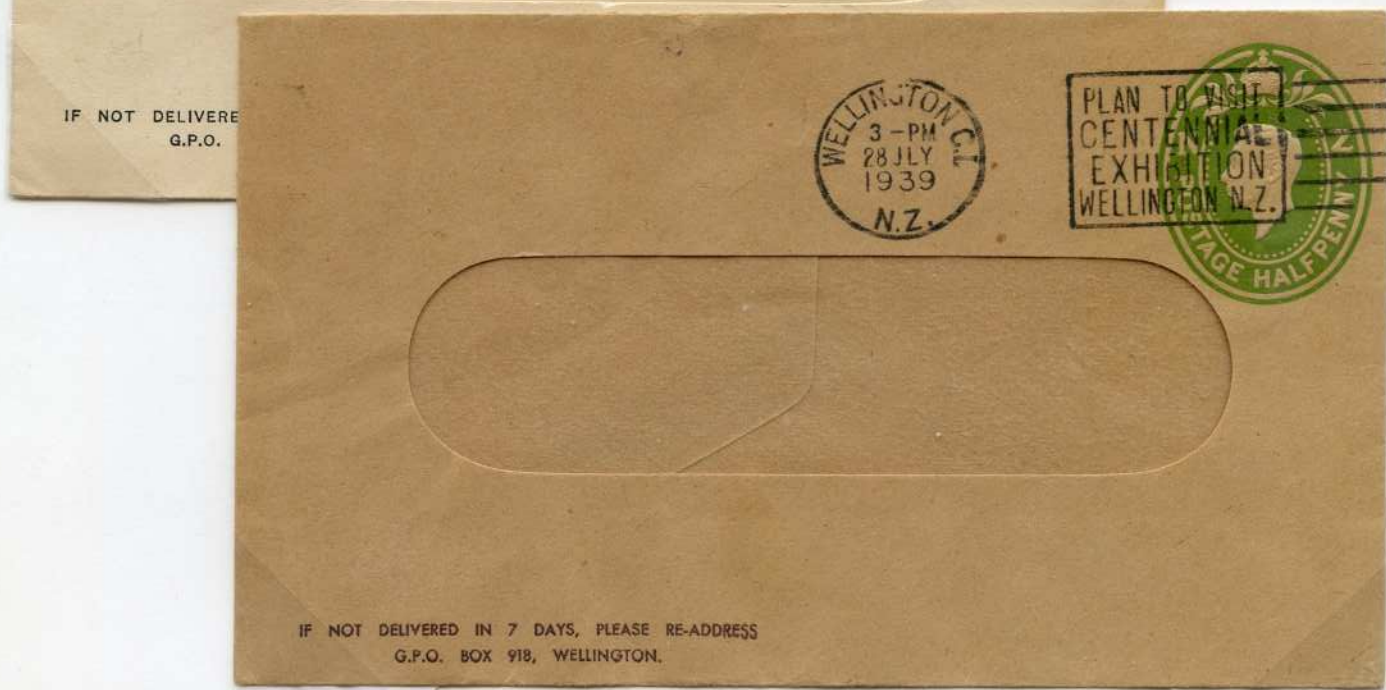
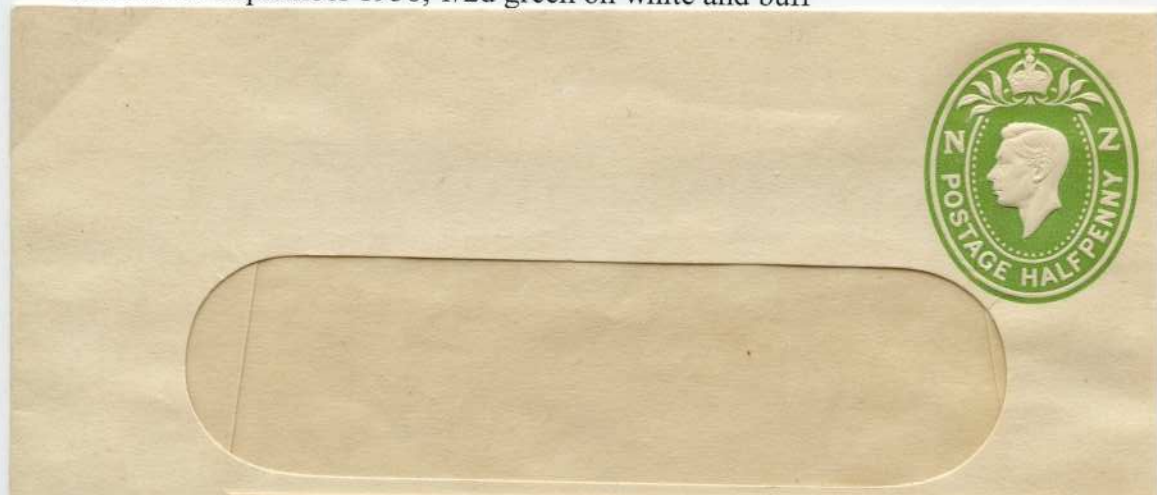


One printing of 5000 envelopes was done. Few examples recorded Ex Samuel

# NEW ZEALAND STAMPED-TO-ORDER ENVELOPES

Alliance Finance Ltd., Wellington

Issue of 30 September 1938, 1/2d green on white and buff



A total of 189,600 envelopes were stamped with the 1/2d KG VI die in 1938 and 1939

Less than 10 examples recorded

# NEW ZEALAND STAMPED-TO-ORDER ENVELOPES

New Zealand Breweries

Issue of 1938 or 1939, 1d orange red on whitish



Although 16,000 in total were printed, an example did not surface until the late 1990s

**Only example known in collector hands**

Alliance Finance Ltd., Wellington

Issue of 1938, 1/2d Fantail design on whitish and buff



Over 25,000 envelopes were printed for this company, using the 1/2d Fantail stamp design

**Three examples recorded on whitish; only one on buff**

# NEW ZEALAND STAMPED-TO-ORDER ENVELOPES

Alliance Finance Ltd, Wellington

Issue of 1938 and 1939, 1d orange red on buff with King George V and King George VI dies

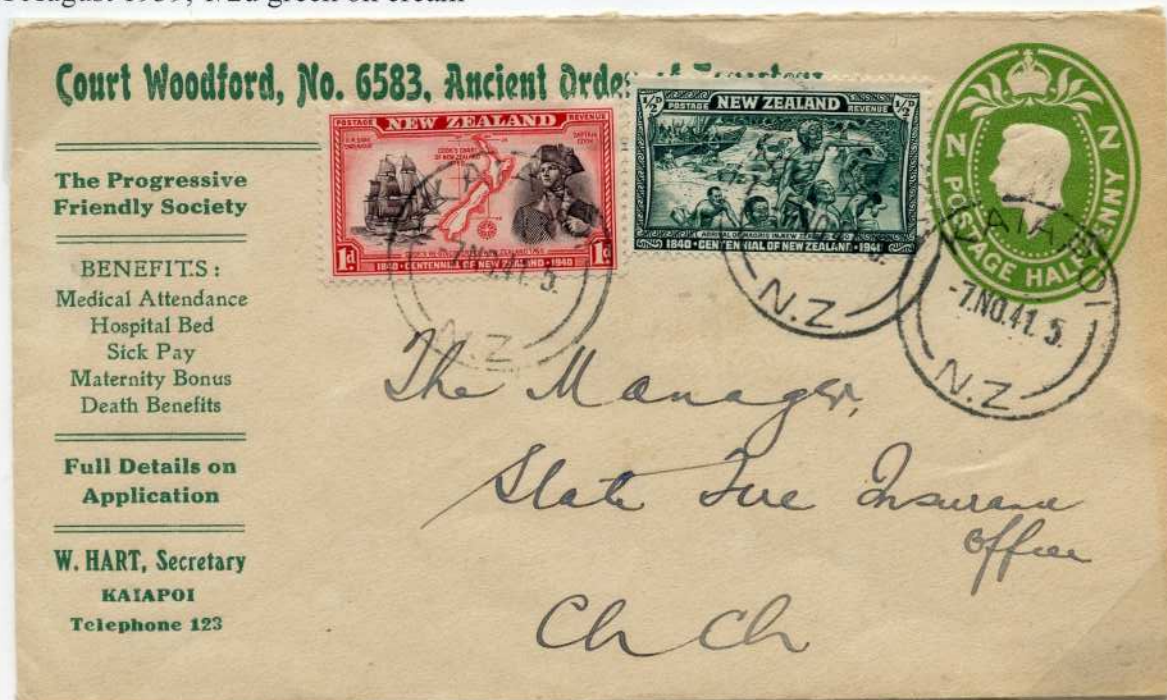


During a period of three years the huge total of 191,089 1d envelopes were printed for this user

King George V die; only known example, King George VI die; three examples recorded

Ancient Order of Forsters, Kaiapo

Issue of August 1939, 1/2d green on cream



Only one printing of 2000 was made for this user

Four examples known to this exhibitor

According to Post Office records, only two other users had envelopes privately stamped during the reign of King George VI; Marriots Ltd in 1940 and PM Taramauni in 1953. Examples of each have yet to be recorded.